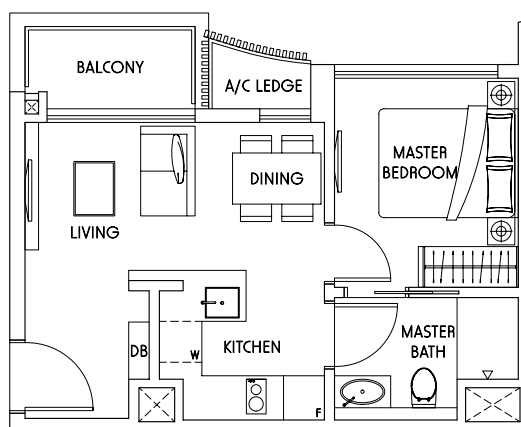


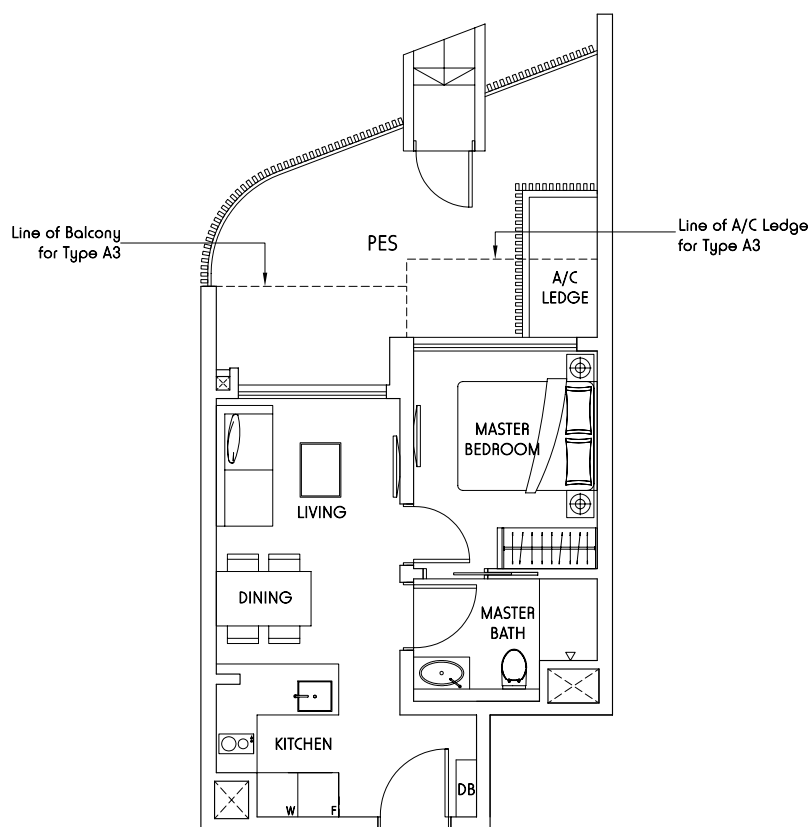
Type A1

43 sq m / 463 sq ft
#06 - 10 to #15 - 10



Type A2

41 sq m / 441 sq ft
#06 - 09 to #15 - 09

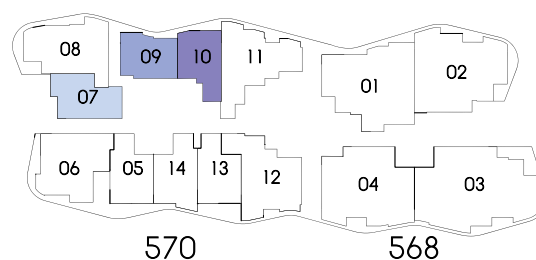


Type A3

43 sq m / 463 sq ft
#07 - 07 to #15 - 07

Type A3p

58 sq m / 624 sq ft
#06 - 07



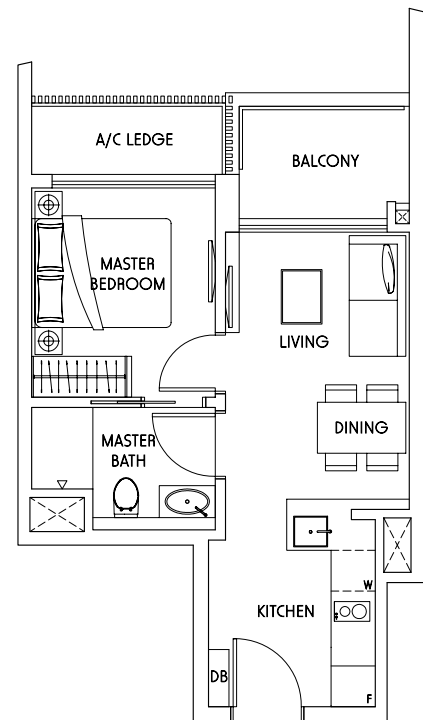
1-Bedroom and 1-Bedroom + Study

Type A4

44 sq m / 474 sq ft
#06 - 05 to #15 - 05

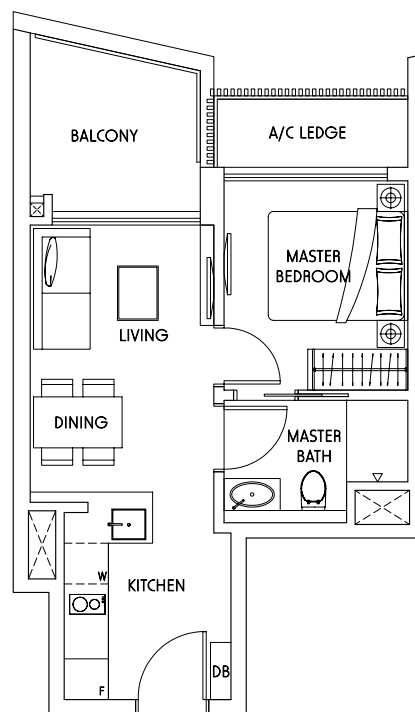
Type A6

44 sq m / 474 sq ft
#02 - 13 to #15 - 13



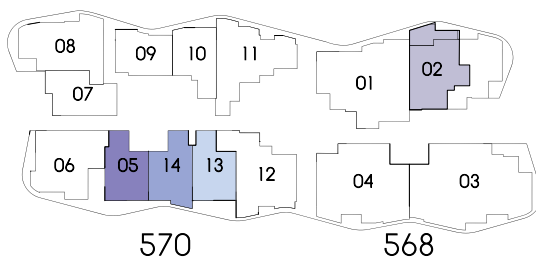
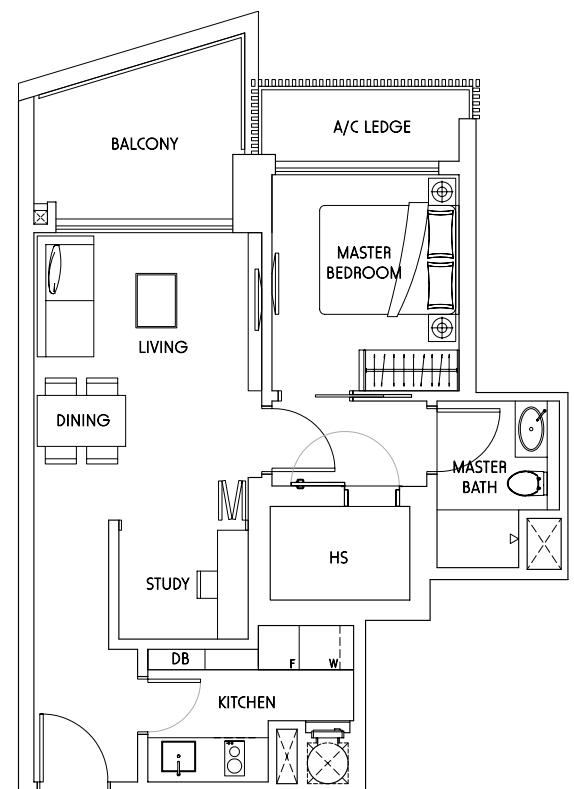
Type A5

46 sq m / 495 sq ft
#02 - 14 to #15 - 14

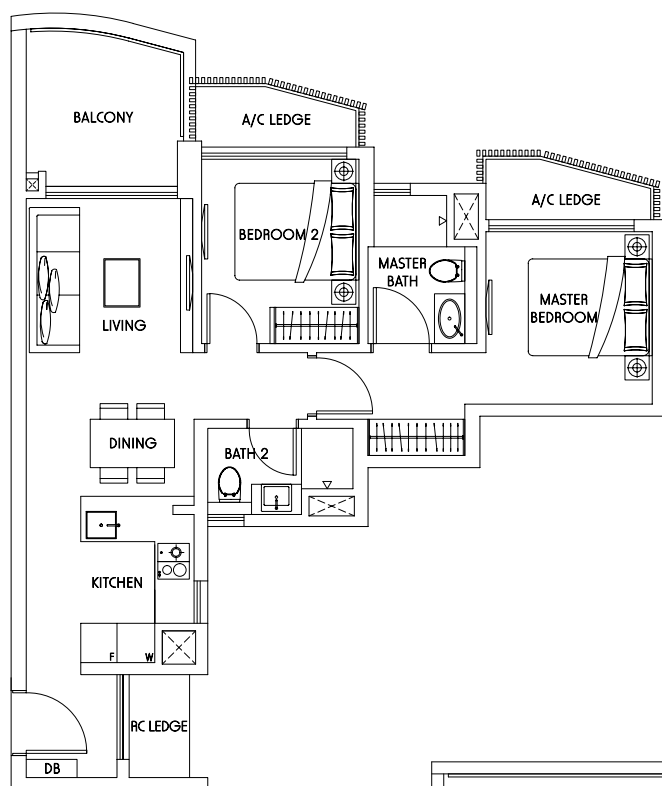


Type A7

67 sq m / 721 sq ft
#02 - 02

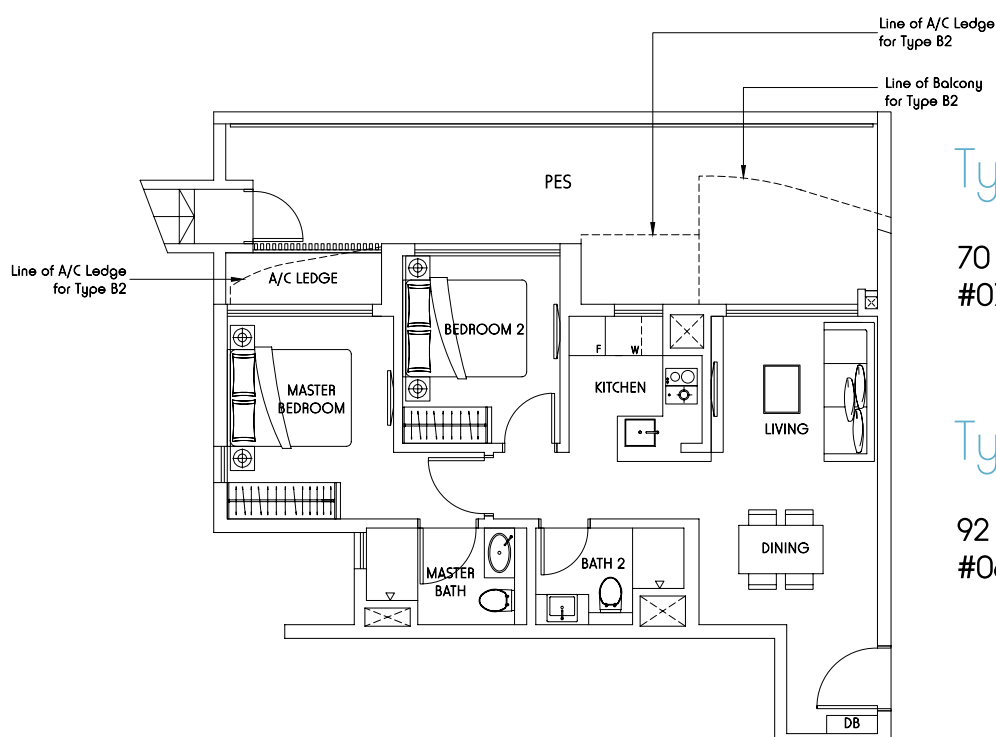


All plans are not to scale and are subject to change as may be approved by authorities.
All floor areas are approximate only and are subject to final survey.



Type B1

74 sq m / 797 sq ft
#02 - 11 to #15 - 11

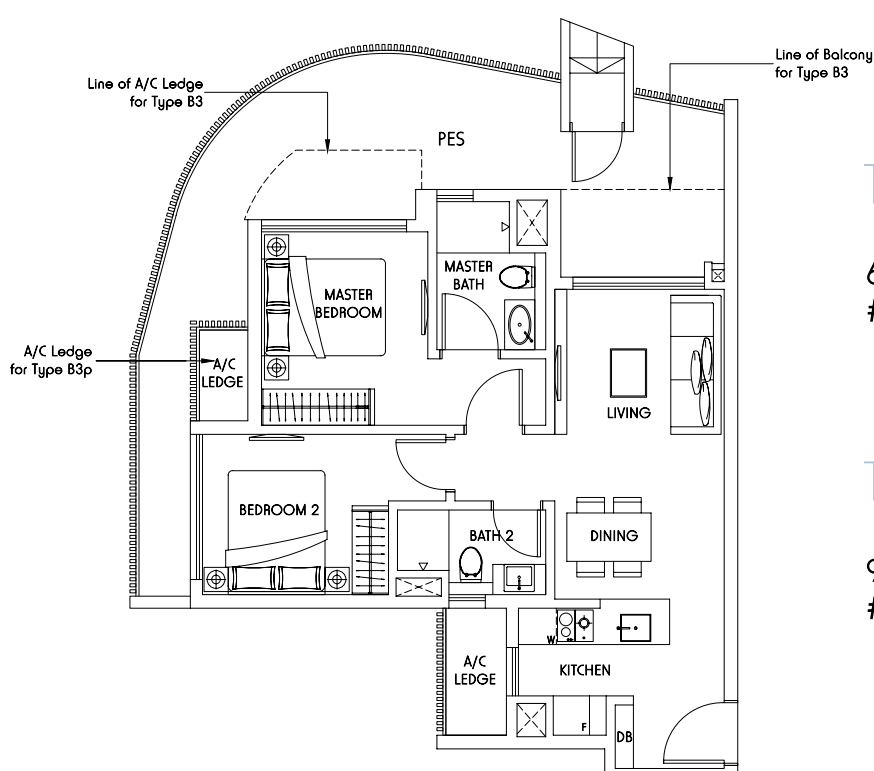


Type B2

70 sq m / 754 sq ft
#07 - 08 - #15 - 08

Type B2p

92 sq m / 990 sq ft
#06 - 08

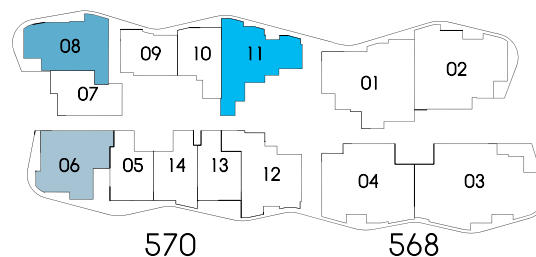


Type B3

69 sq m / 743 sq ft
#07 - 06 to #15 - 06

Type B3p

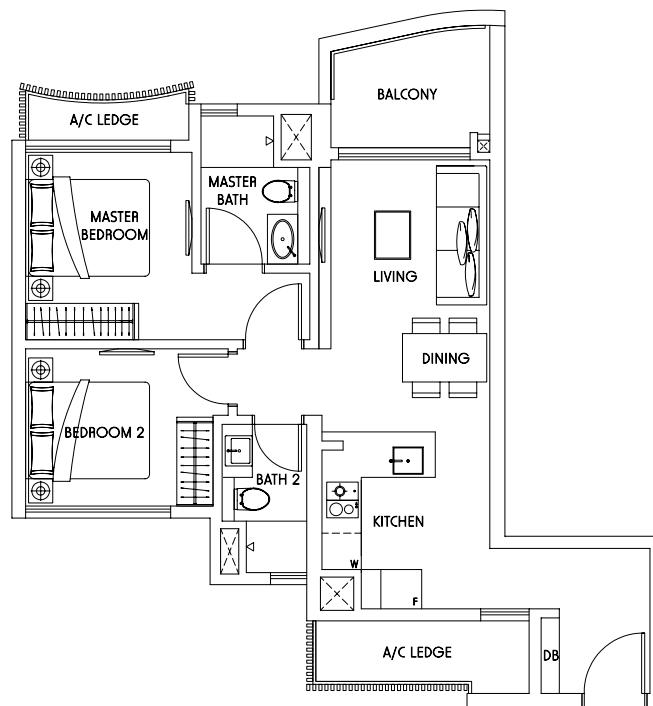
96 sq m / 1,033 sq ft
#06 - 06



2-Bedroom

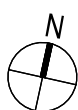
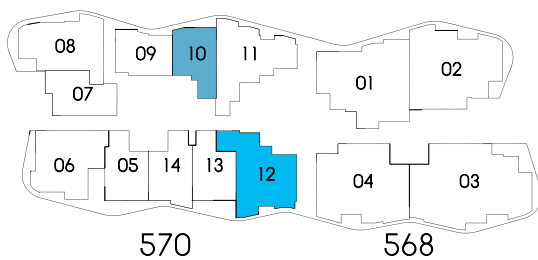
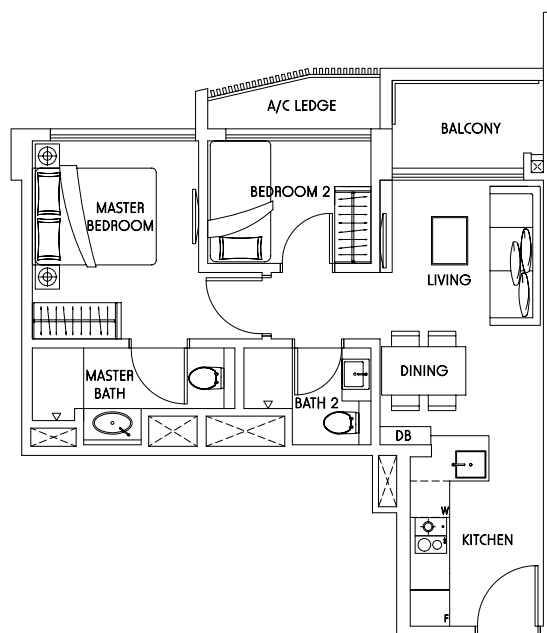
Type B4

74 sq m / 797 sq ft
#02 - 12 to #15 - 12

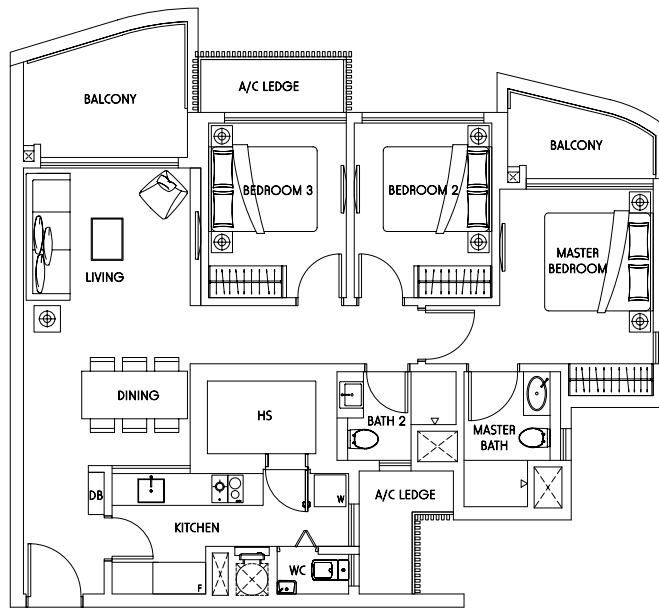


Type B5

57 sq m / 614 sq ft
#02 - 10 to #05 - 10

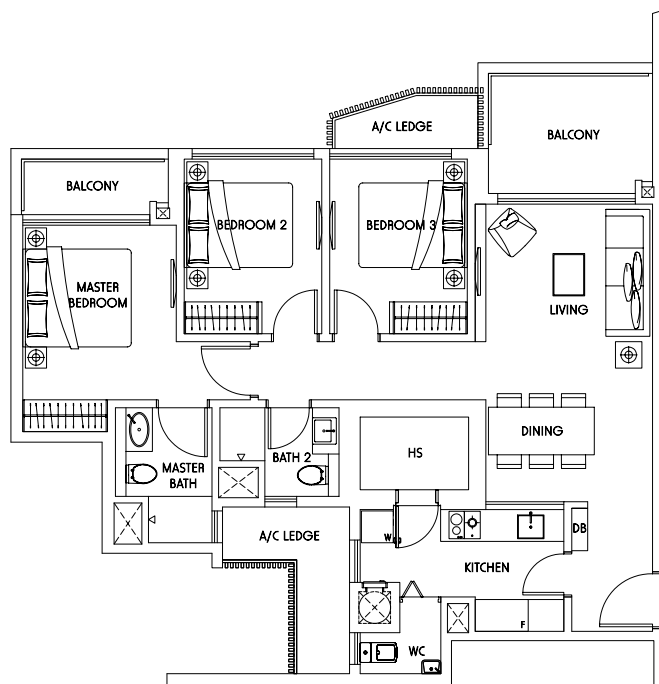


All plans are not to scale and are subject to change as may be approved by authorities.
All floor areas are approximate only and are subject to final survey.



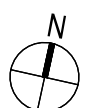
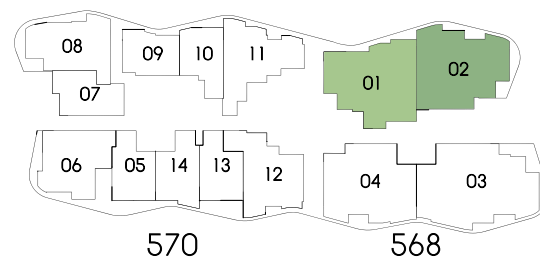
Type C1

107 sq m / 1,152 sq ft
#03 - 02 to #14 - 02



Type C2

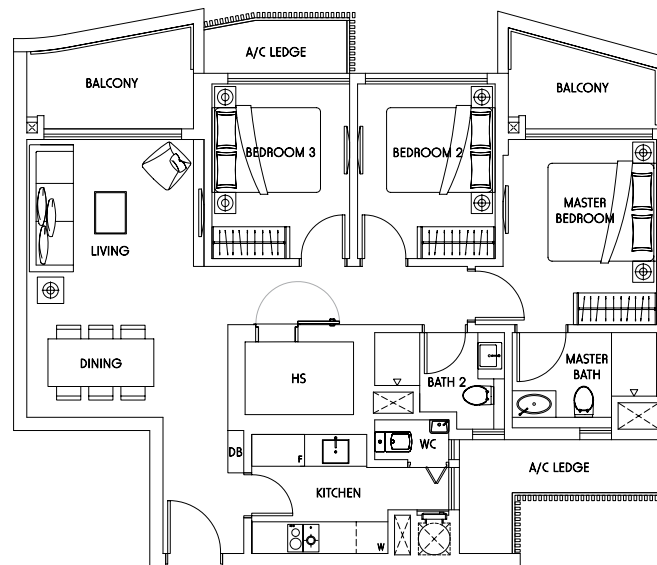
108 sq m / 1,163 sq ft
#02 - 01 to #14 - 01



3-Bedroom

Type C3

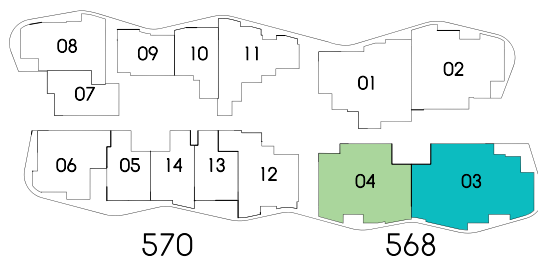
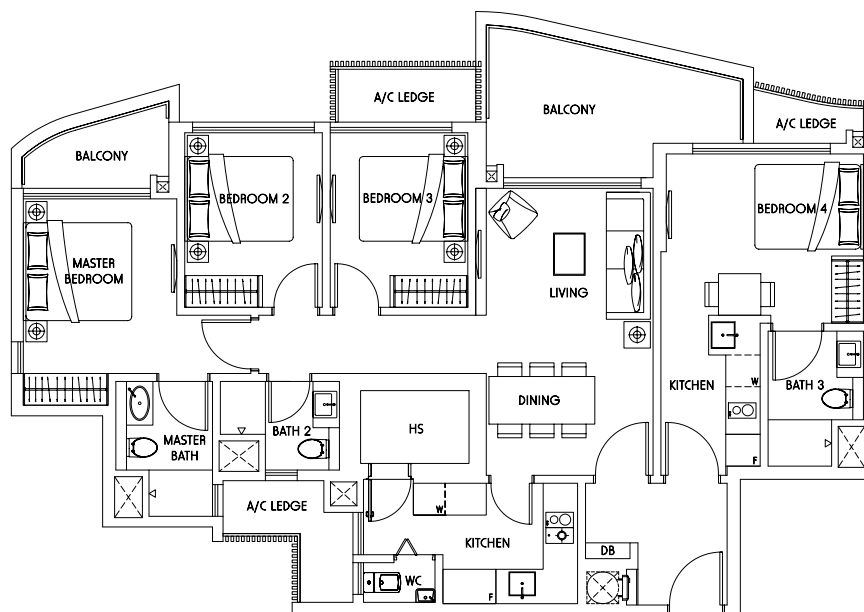
107 sq m / 1,152 sq ft
#02 - 04 to #14 - 04



4-Bedroom Dual-key

Type D1

139 sq m / 1,496 sq ft
#02 - 03 to #14 - 03



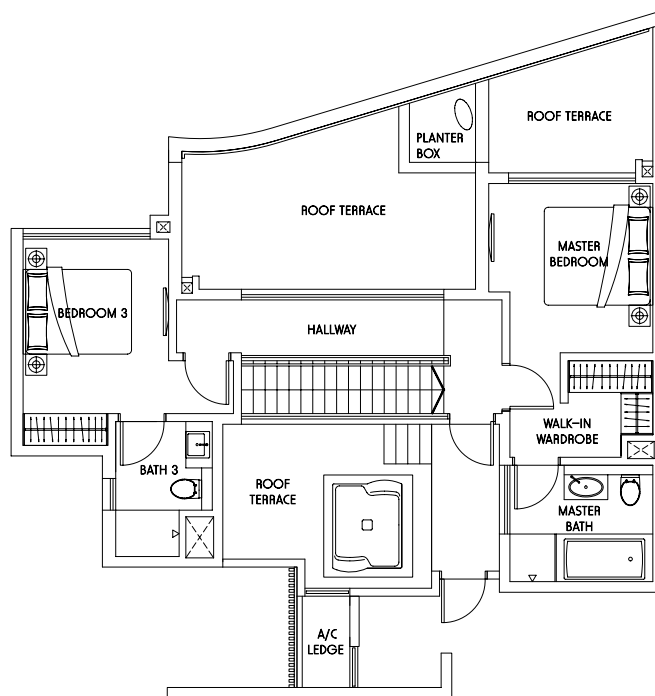
All plans are not to scale and are subject to change as may be approved by authorities.
All floor areas are approximate only and are subject to final survey.



Indulge in the spaciousness of the

Penthouses

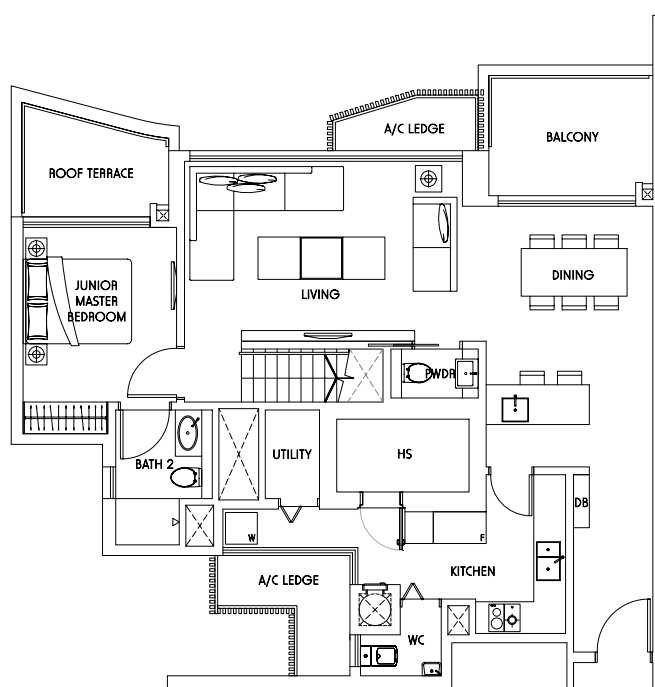
3-Bedroom Penthouse



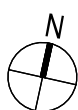
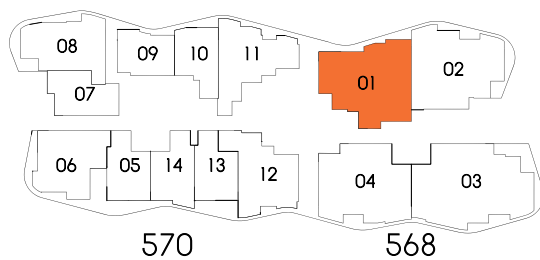
UPPER PENTHOUSE

Type PH 1

213 sq m / 2,293 sq ft
#15 - 01

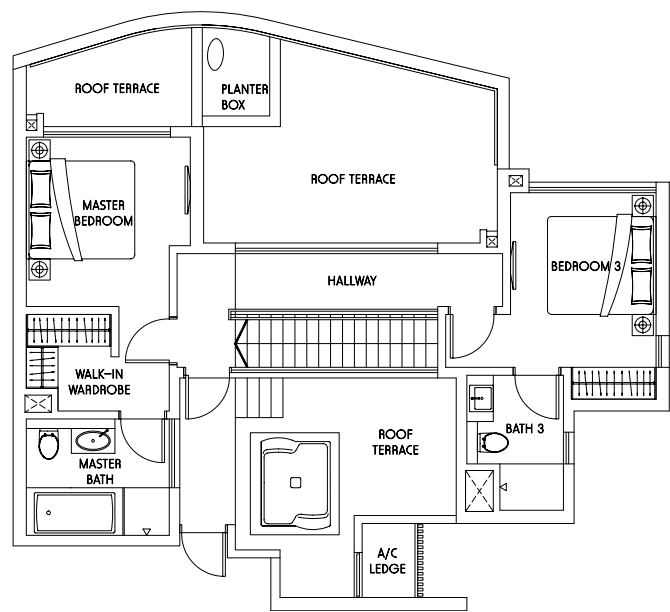


LOWER PENTHOUSE



All plans are not to scale and are subject to change as may be approved by authorities.
All floor areas are approximate only and are subject to final survey.

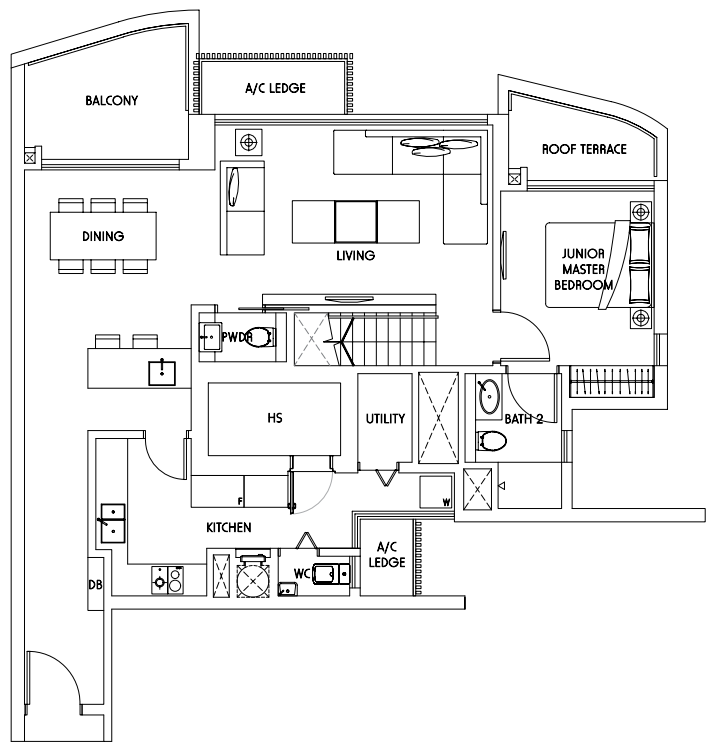
3-Bedroom Penthouse



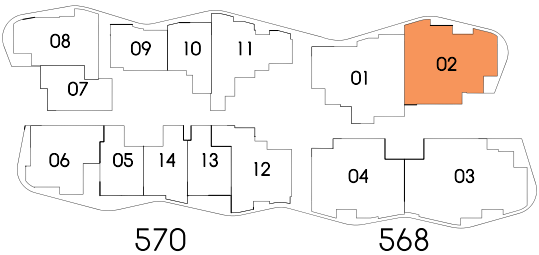
UPPER PENTHOUSE

Type PH2

213 sq m / 2,293 sq ft
#15 - 02

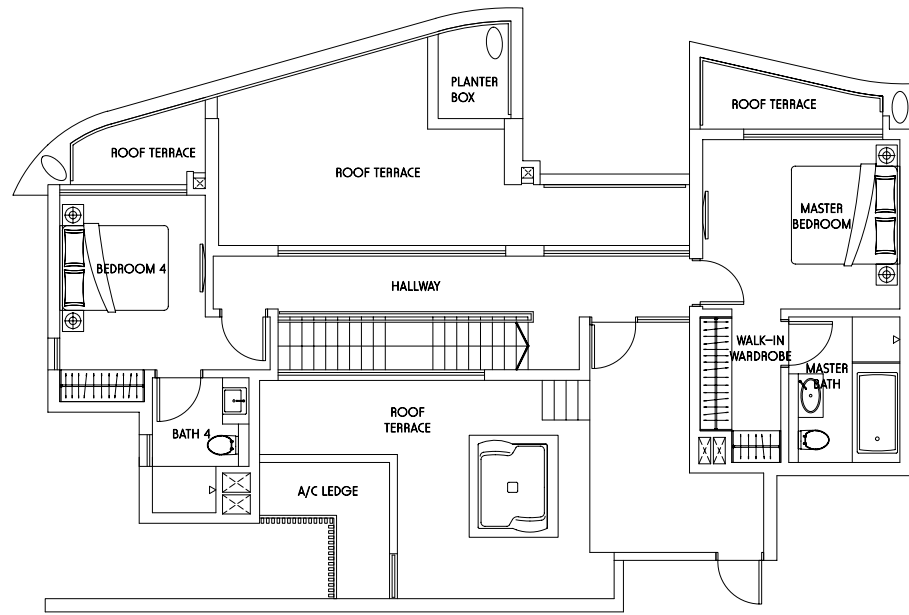


LOWER PENTHOUSE



All plans are not to scale and are subject to change as may be approved by authorities.
All floor areas are approximate only and are subject to final survey.

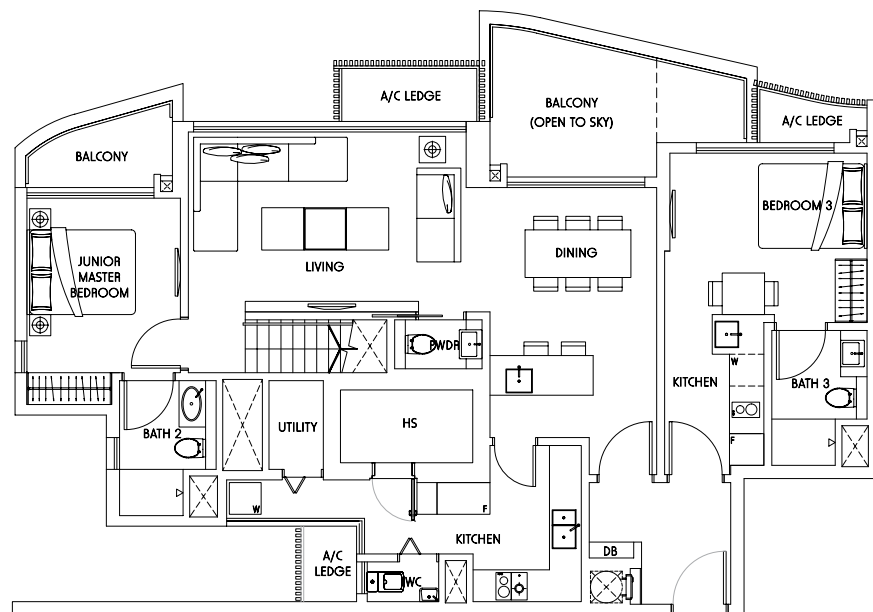
4-Bedroom Dual-key Penthouse



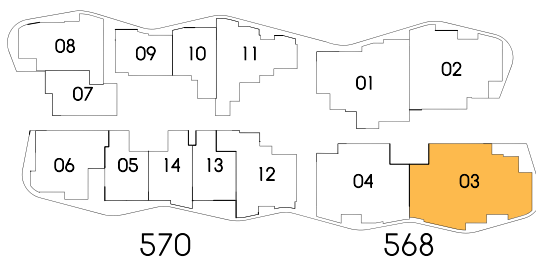
UPPER PENTHOUSE

Type PH3

270 sq m / 2,906 sq ft
#15 - 03

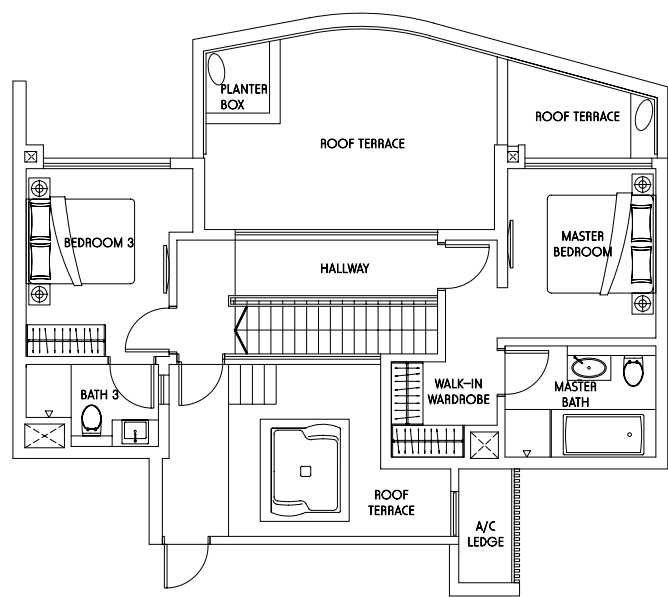


LOWER PENTHOUSE



All plans are not to scale and are subject to change as may be approved by authorities.
All floor areas are approximate only and are subject to final survey.

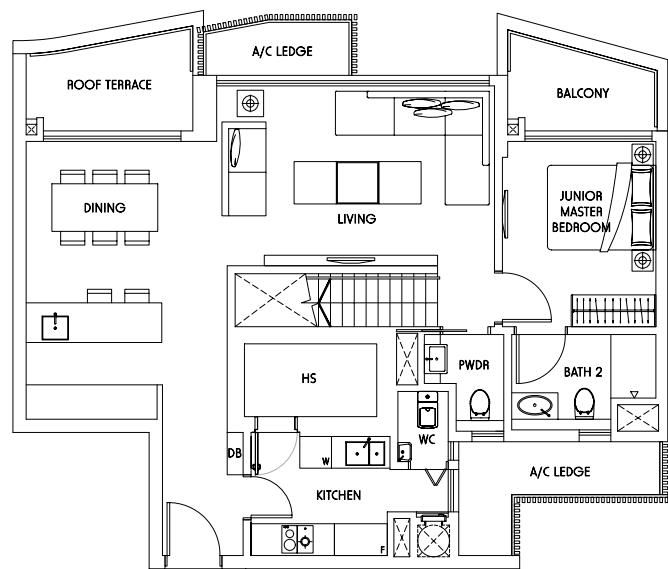
3-Bedroom Penthouse



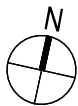
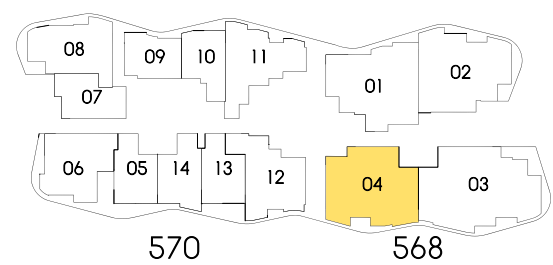
UPPER PENTHOUSE

Type PH4

205 sq m / 2,207 sq ft
#15 - 04



LOWER PENTHOUSE



All plans are not to scale and are subject to change as may be approved by authorities.
All floor areas are approximate only and are subject to final survey.